

LED FILM

User Manual

Warranty Provisions

- Contained in Filmbase's agreements with its direct customers, who (if distributors or resellers) then typically pass the benefits of the warranties through to their customers.
- In the event of any inconsistency between the terms of this summary of general warranty policies and contractual warranty provisions, the contractual warranty provisions control.

Service

- Provide corresponding technical support and technical cooperation for the products sold, and guarantee 24-hour technical hotline service.
- Filmbase provides online remote free services.
- For common simple fault problems: Filmbase provides remote technical guidance through instant messaging tools such as telephone, email, and remote software to help solve problems in the use of the equipment. Including but not limited to the connection problems of signal lines and power lines, system software problems of software use and parameter setting, and replacement of modules, power supplies, and system cards.
- If Filmbase provides engineers with on-site guidance for installation, commissioning, and maintenance, customers need to pay for travel, accommodation and other living expenses;

Duration

- Provide two-year free warranty and lifetime maintenance services for the products sold.
- Extended warranty will be charged at 10% per year. If a longer warranty period is required, the details coverage will be agreed on with the Customer and detailed in the sales contract.

Repair and replacement

- When the online remote service cannot solve the problem, Filmbase will confirm with the customer whether to return to the factory for repair.
- If you need to return to the factory for repair, the customer can ship the product or parts that need to be repaired to the Filmbase production factory, and the customer bears the return shipping, insurance, customs and customs clearance costs. After the repair is completed, Filmbase will send the product or parts back to the customer, and only bear the return shipping cost.

Safety Guidelines



CAUTION: Risk of electric shock.



CAUTION: Be aware of flammable materials.



CAUTION: Read this manual before the installation and keep this manual.



CAUTION: Pay attention to the hot surface.

Disclaimer

- Unless otherwise agreed, this warranty does not apply to consumables, including but not limited to connectors, networks, cables, optical cables, cables, power cables, signal cables, aviation connectors and other wire connection objects.
- All part of defects, malfunctions or damages caused by improper use, improper handling, improper operation, improper installation, disassembly of the display or any other improper behavior of the customer. And defects, malfunctions or damages caused by transportation.
- Unauthorized disassembly and repair without the permission and authorization of Filmbase.
- Failure to operate and maintain the product in accordance with the product manual.
- Man-made damage, physical damage, accident damage and product misuse damage, such as component defect damage, PCB board defect, etc.
- Product damage or malfunction caused by force majeure, including but not limited to force majeure events such as war, terrorist activities, floods, fires, earthquakes, lightning, etc.
- The product should be stored in a dry and ventilated environment. Any product defect, malfunction or damage caused by storage in an external environment that does not comply with the product manual, including but not limited to: extreme weather, humidity, salt spray, pressure, lightning, sealed environment, compressed space storage, etc.
- Use the product under conditions outside the product parameter range, including but not limited to lower or higher voltage conditions, extreme or excessive power surges, and inappropriate power conditions.
- During the installation process, defects, failures or damages caused by non-compliance with technical guidelines, instructions or precautions.
- Natural loss of brightness and color under normal conditions.
- Repair or attempted repair by anyone other than Filmbase.
- Other repairs not caused by product quality, design, and manufacturing.
- Inability to provide a valid warranty card, the product serial number sealing tape is torn off or damaged, the product shell or other external parts are damaged, or other valid certificates cannot be provided.
- Issues after the warranty period.
- For products that are not repairable due to improper operation, accidents, improper maintenance, and non-compliance with product specifications.

CONTENTS

01/LED Film

Product description and features	01
Specifications	01

02/Product drawings

Finished product picture	02
--------------------------	----

03/Product Installation

Assembly parts	03
Preparation for installation	03
Installation steps	04

04/Video uploading and editing

APP mobile control	06
Mobile phone operating instructions	06
PC software control	08
Computer operating instructions	09

05/Disassembly and maintenance

Demolition process	11
Maintenance	11

01/LED film

Product description and features



Independent innovation:

This product has multiple invention patents and is the latest product that is completely independently innovated and constantly optimized;



Environmental protection and energy saving:

Compared with traditional LED screens, power consumption is lower and installation is more convenient and faster;



High light transmittance:

Depending on different resolutions, the light transmittance ranges from 40% to 90%, and can perfectly present videos or pictures;



Easy to install:

Modular design, ultra-thin, high-definition, high-brightness, and can display naked-eye 3D effects when combined with video;



Application places:

Glass curtain walls, supermarkets, shopping plazas, commercial centers, parks, car sales stores, exhibition halls, landmark buildings, etc.

Specifications

Model	P4	P5	P6	P8	P10	P20
Point spacing	4.4*4.4	5.5*5.5	6.6*6.6	8.8*8.8	10*10	20*20
Module width①	240	240	240	240	240	240
Module height	≤1500	≤1500	≤1500	≤1500	≤1500	≤1500
Pixel density (dots/SQM)	62500	40000	27556	15625	10000	2500
Brightness②	0-5000	0-5000	0-5000	0-5000	0-5000	0-2500
Transmittance	50%	70%	75%	85%	85%	95%
Best viewing distance	≥4M	≥5M	≥6M	≥8M	≥10M	≥20M
Pixel Configuration	16bit	16bit	16bit	16bit	16bit	16bit
Protection level	IP20	IP20	IP20	IP20	IP20	IP20
Service life	≥100000H	≥100000H	≥100000H	≥100000H	≥100000H	≥100000H
Maximum power	650W	650W	650W	650W	650W	650W
Average power	230W	230W	230W	230W	230W	230W
Control plan	Nova	Nova	Nova	Nova	Nova	Nova
Control method	Computer/Moble	Computer/Moble	Computer/Moble	Computer/Moble	Computer/Moble	Computer/Moble
Input voltage⑤	DC5V	DC5V	DC5V	DC5V	DC5V	DC5V
Flat weight(Kg/SQM) ④	3kg/m ²	2.9kg/m ²	2.7kg/m ²	2.5kg/m ²	2.3kg/m ²	2kg/m ²
Operating temperature	-20°C-50°C	-20°C-50°C	-20°C-50°C	-20°C-50°C	-20°C-50°C	-20°C-50°C
Working humidity	10-90%	10-90%	10-90%	10-90%	10-90%	10-90%
Storage temperature	-20°C-70°C	-20°C-70°C	-20°C-70°C	-20°C-70°C	-20°C-70°C	-20°C-70°C
Storage humidity	10-90%	10-90%	10-90%	10-90%	10-90%	10-90%
Usage environment	In door③	In door③	In door③	In door③	In door③	In door③
Drive mode	Static	Static	Static	Static	Static	Static
Scanning frequency	3840Hz	3840Hz	3840Hz	3840Hz	3840Hz	3840Hz

Note: ① When it is not a multiple of 240mm, it can be cut according to the actual situation;

② Usually produced according to our normal brightness, the specified brightness needs to be customized;

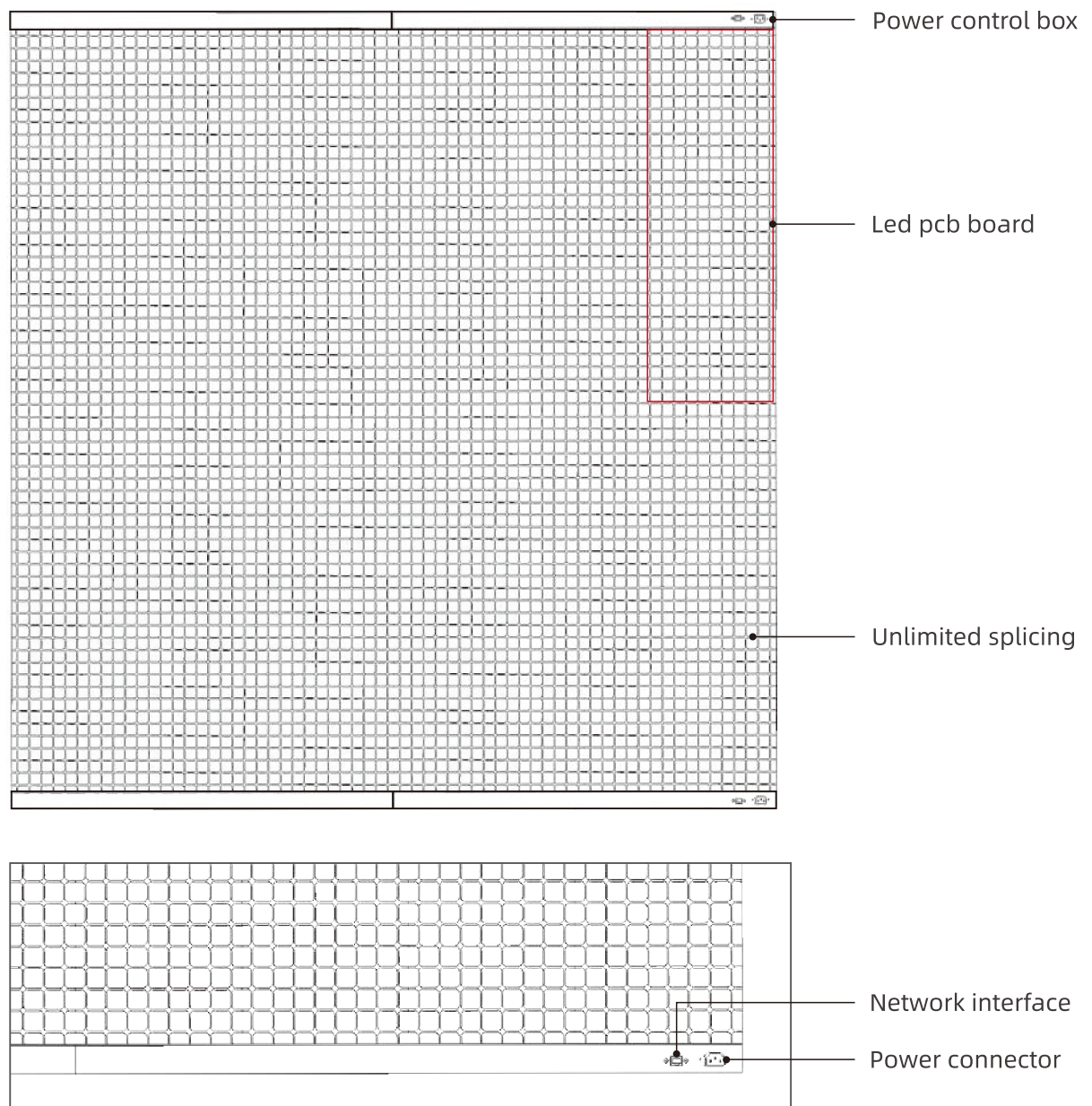
③ Outdoor use requires customized waterproof accessories

④ Excluding the weight of the power box

⑤ Input voltage of LED film

02/Product drawings

Finished product picture



03/Product Installation

Assembly parts



Network cable



Video processor



Power cable



Power control box



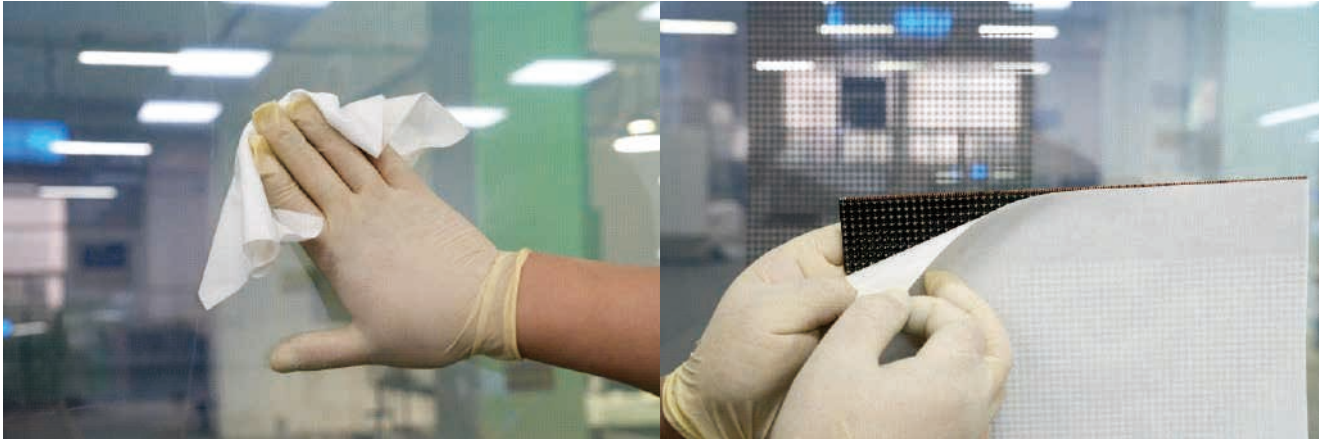
LED PCB boards

Preparation for installation

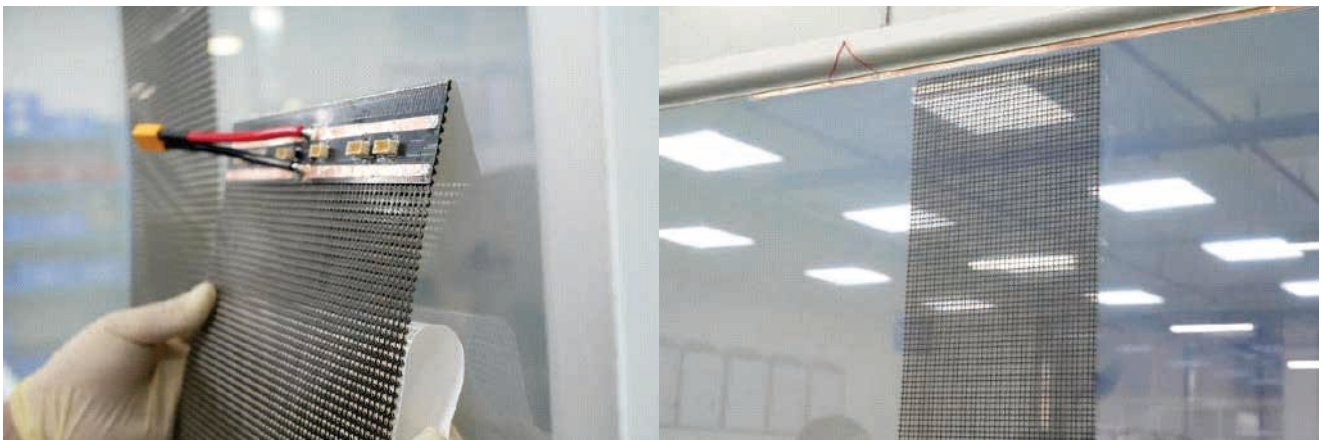
- (1) Clean the surrounding environment and keep it free of debris and dust. If possible, please wear dust-proof clothing.
- (2) Review the size of the glass, check the material list of the film screen, and check whether the size of the film screen matches the size of the glass;

Installation steps

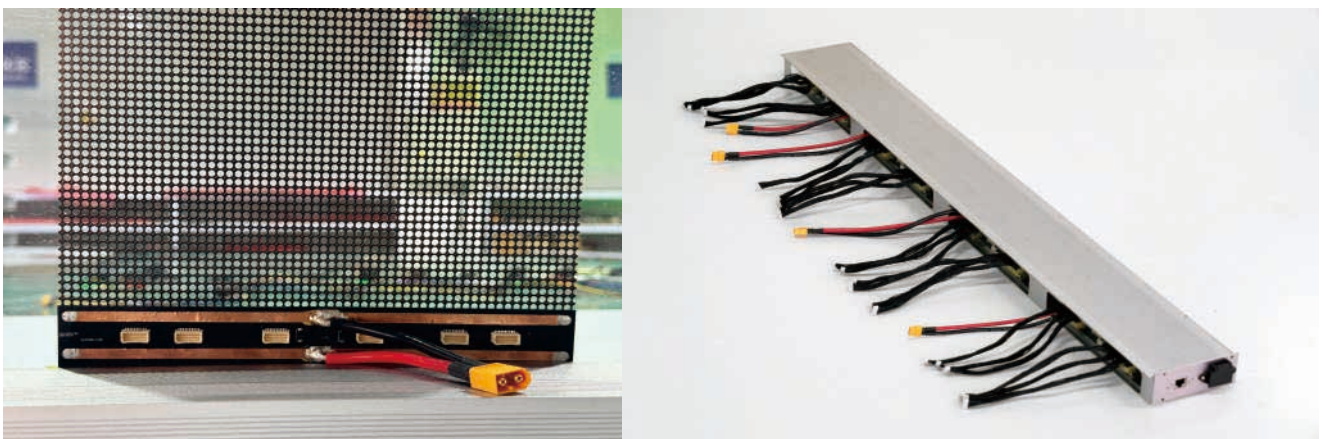
1. Clean and wipe the surface of the glass in the installation area, and keep the glass surface dry and free from obvious defects.
2. Peel off the protective film on the surface of the film screen, find the display lamp bead surface, note that the lamp bead surface is with adhesive, please do not touch with hands



3. Take the module left and right ends of the position, to avoid damage to the edge or corner, adjust the level, align the installation area position, with the display lamp beads with adhesive surface pasted to the glass surface. End of single module installation, multi-module installation in accordance with the first module position can be aligned with each other.



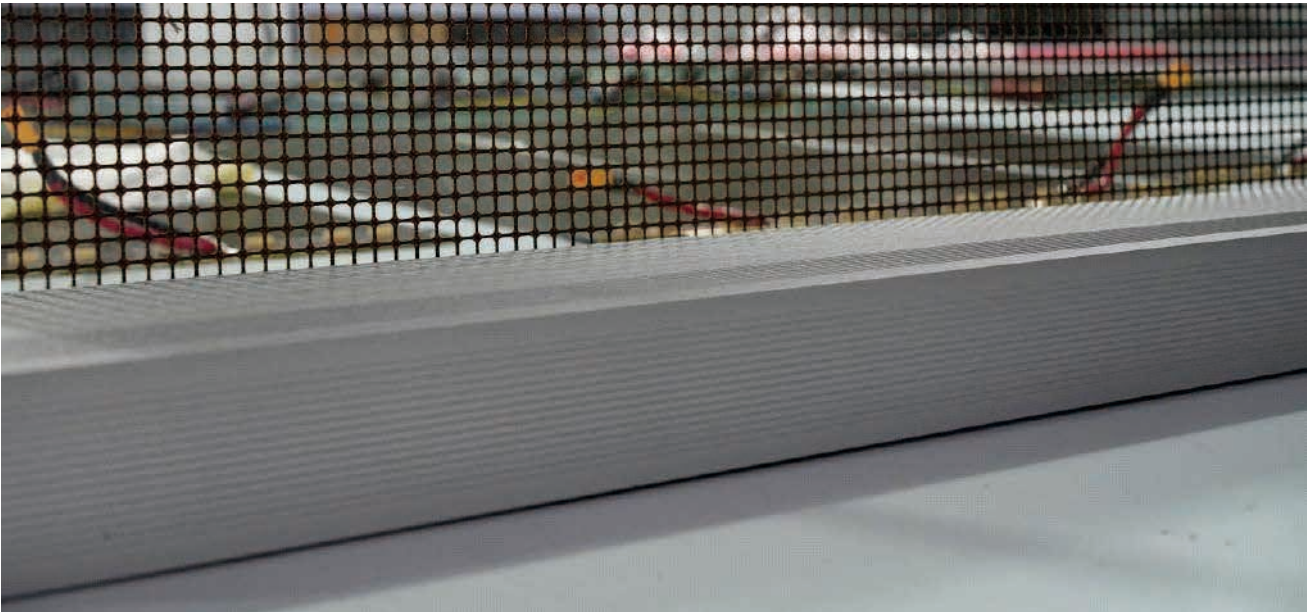
4. Fix the power box and connect the cables to the corresponding terminals according to the serial number.



5. Take out the network cable to connect the power control box and the video processor, and then use the power cable to connect the control box and the socket.



6. Confirm that the above wiring are correct, and then turn on the power, the control box and wiring hidden, to avoid daily bumping, pay attention to waterproof.



04/Video uploading and editing

APP mobile control

Download and install ViPlex Handy app on your cell phone.

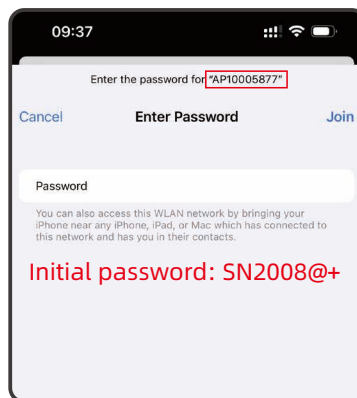


Scan QR code to
download and install

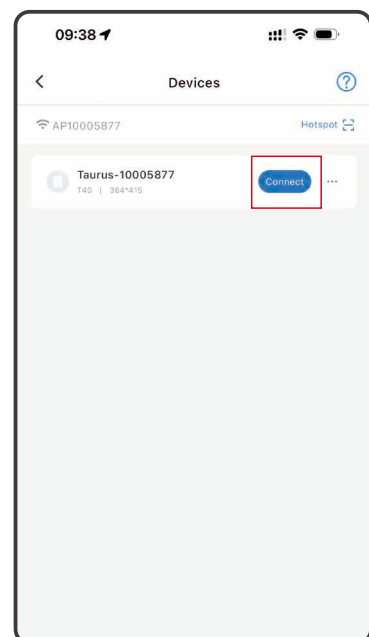
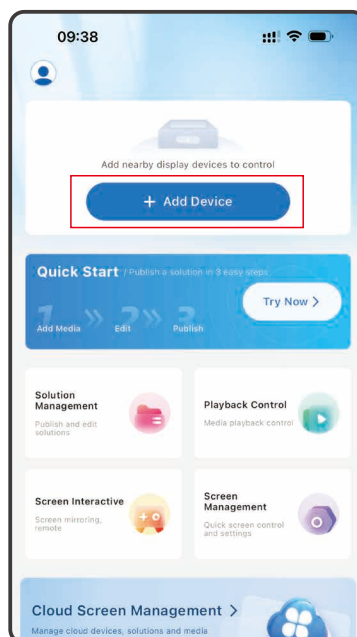
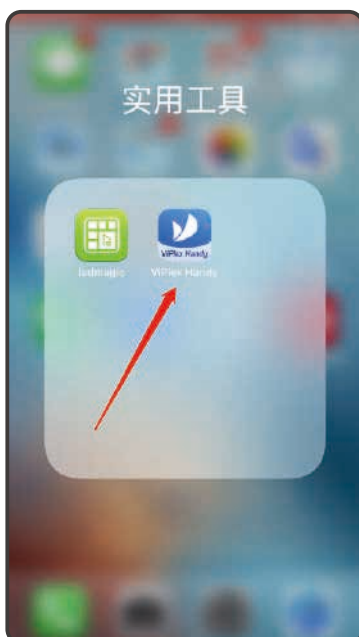
ViPlex Handy

Mobile phone operating instructions

1. Connect wifi to the AP of the NUOWA play box, and the name starts with AP*****.

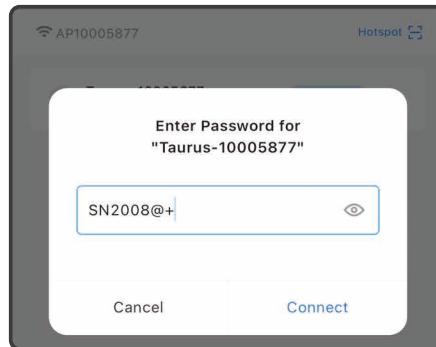


2. Go back to the phone desktop, open the APP (ViPlex Handy), select Add Device, and then click connect. After the connection is successful, the Taurus-***** icon will change from gray to blue.



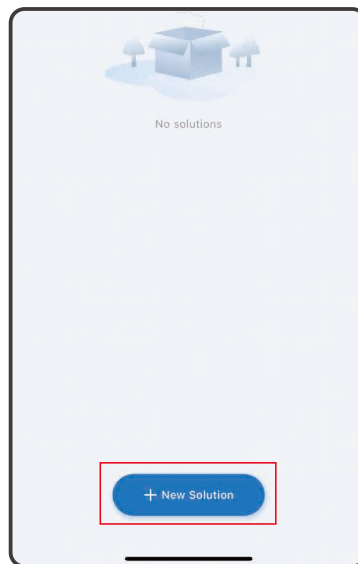
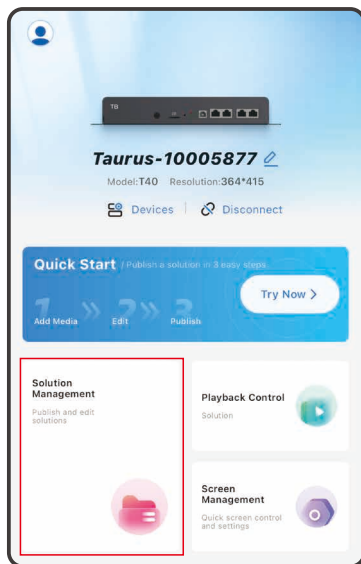
3. Enter Password

Password:SN2008@+

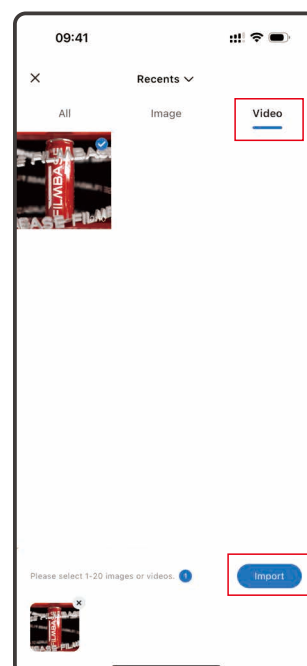


4. Click Add Solution to add programs Solution Name can edit the file name, Solution Resolution is the resolution X*Y of the LED transparent screen, X represents the number of LED lamp beads on the horizontal coordinate, and Y is the number of LED lamp beads on the vertical coordinate, just input according to the actual number.

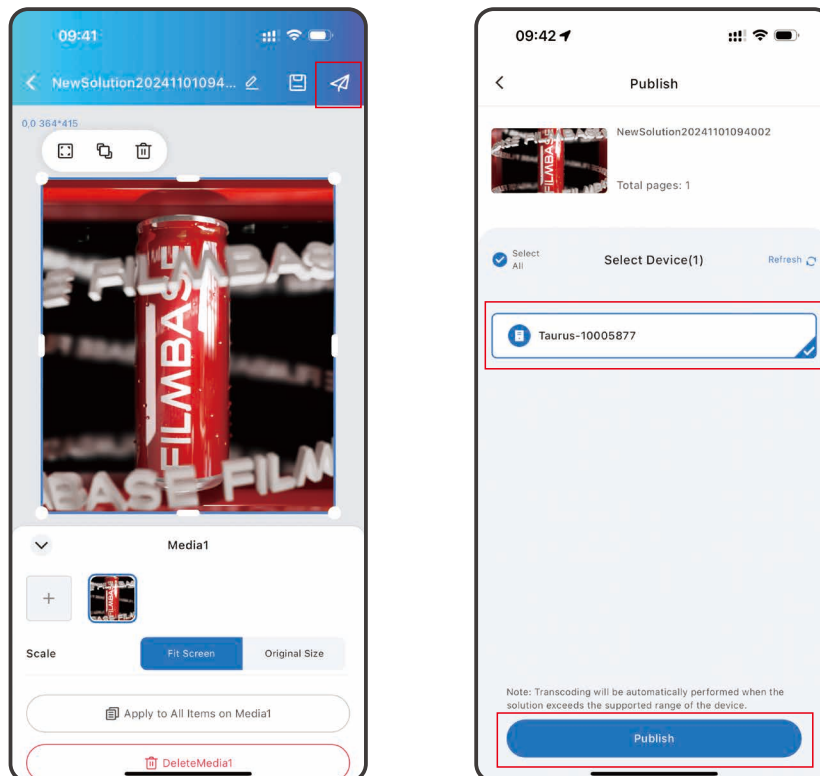
Window Layout Select the first item, the whole is an LED screen; then click OK to enter the next step.



5. Click Add Media, then select the type of file to be added, enter the mobile phone album to select the file to be added (up to 9 files can be selected at a time), and then click OK.



6. Click the send button, then select the receiving device Taurus-*****, then click Publish, wait for a few minutes, and the LED screen will play the selected file.

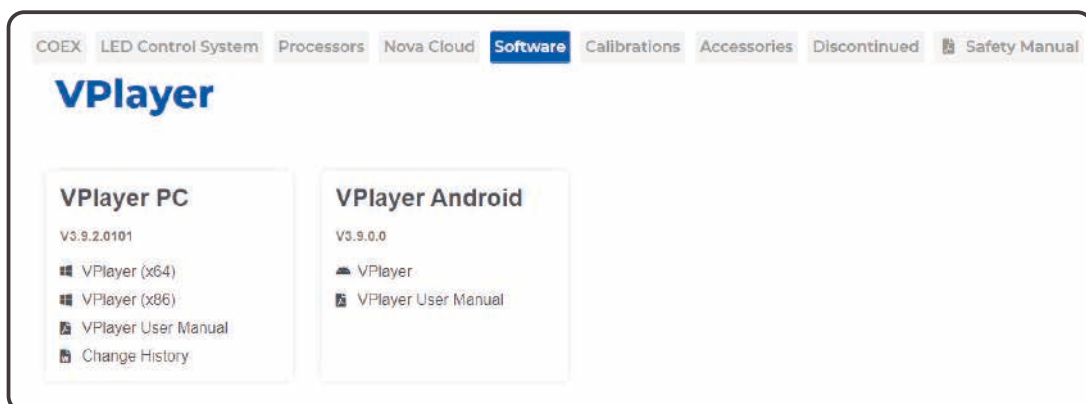


PC software control

For computers, click on the link to jump to the website, click on the Software category and slide down to find VPlayer and click on download and install.

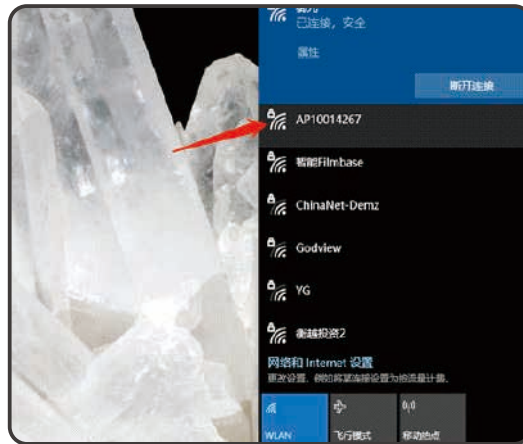
Downloadlink:

www.novastar.tech/downloads/?_sasdk=dMTg5MWUzOWU2NmQ2ZWltMGQzNjgwM2VLZGNmNDItMjYwMzFhNTEtMjA3MzYwMCOxODkxZTM5ZTY2ZTEyMTQ

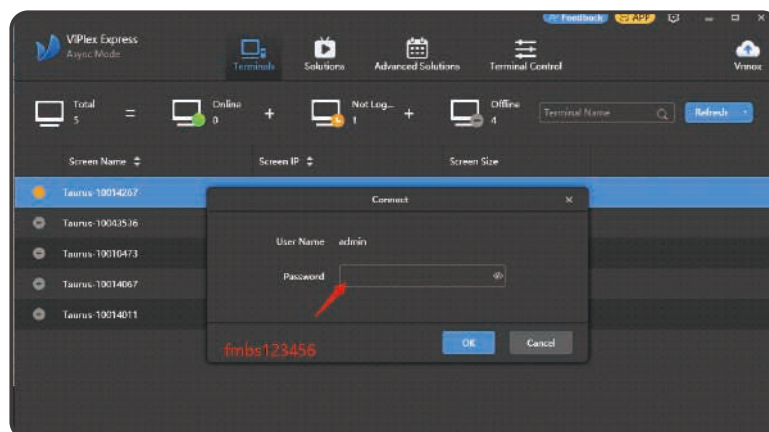


Computer operating instructions

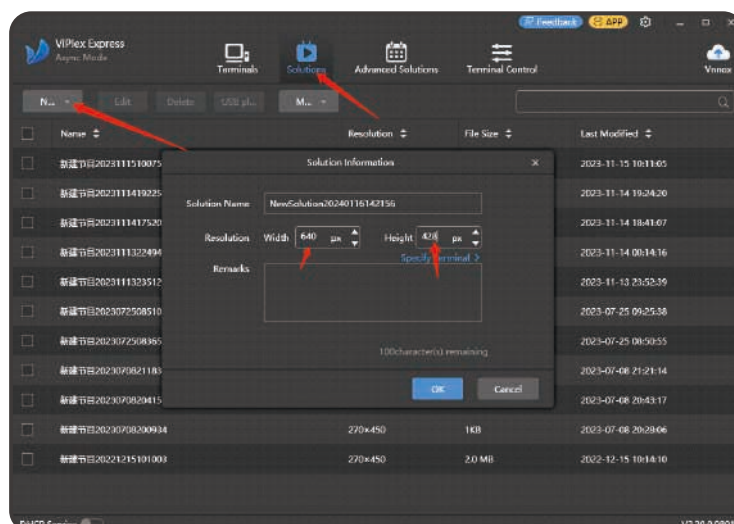
1. Connect to the AP hotspot of LED film, password: fmbs123456



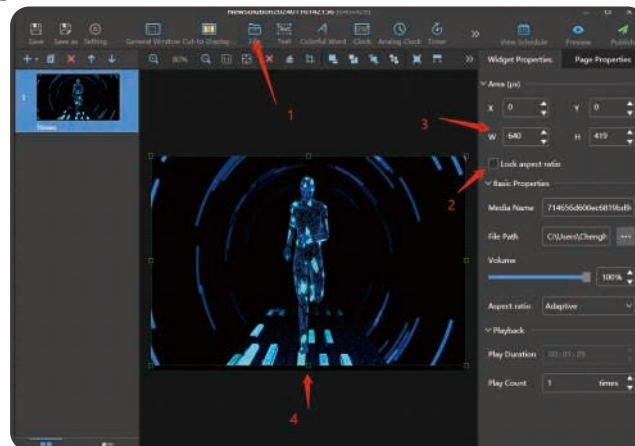
2. Connect the software to the playback box and enter the login password: fmbs12345



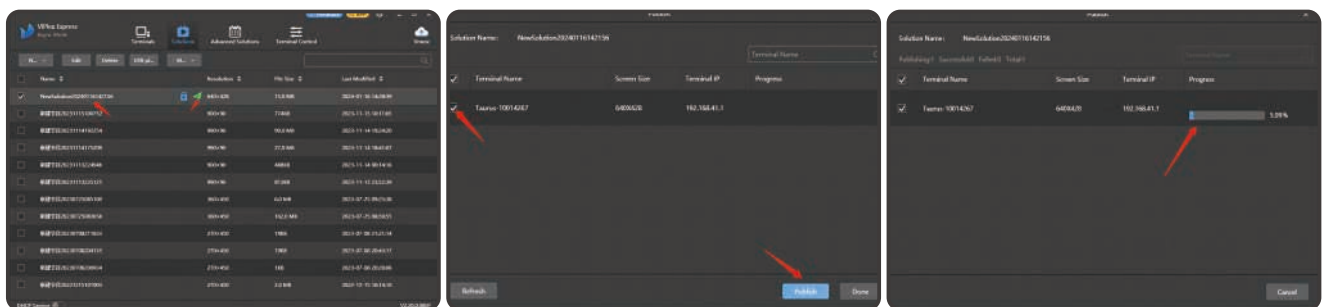
3. Click Solutions, click New Regular Screen, create a new playback program, you can rename the file name, and then modify the values of W and H (i.e. the number of LEDs in width and height) according to the actual pixels of the LED Film.



4. Click file to add the video file, cancel the Lock aspect ratio, modify the W and H values to correspond to the LED film pixels, and drag the video image to fill the entire display area, and finally click Publish to complete the video editing.

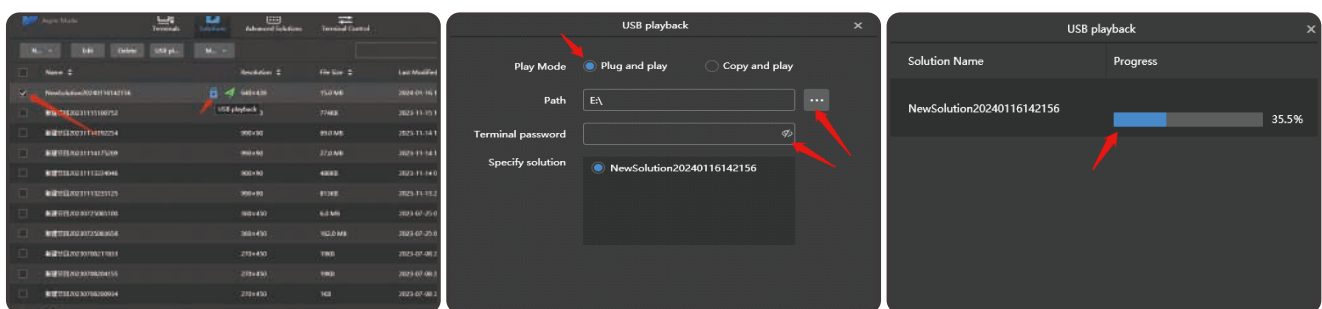


5. Select the video file you just edited, click Publish, and then select the play box to send the video file to the play box.



6. Import video from U disk drive

If you need to save the edited video to a USB flash drive first, and then insert the USB flash drive into the play box to read and play from the USB flash drive, the operation is as follows:



After uploading, you can insert the U disk into the USB playback box, and the LED Film will play the video content in the U disk.

05/Disassembly and maintenance

Demolition process

If you need to move it to another piece of glass for use, or if you need to disassemble the LED lamp when it does not light up, please refer to the following steps:

- Open the cover of the power control box, pull out all the removable terminal wires on the LED film, and mark them accordingly if necessary;
- Remove the fixing screws on the top of the power control box and remove the power control box. This step can be omitted if it is just for maintenance;
- Remove the LED film from the glass surface. Care must be taken during this process to avoid the angle between the LED film and the glass being too large, causing the PCB to break;
- When stacking LED films, a spacer is required in the middle to prevent the LED lamp beads from colliding with each other and causing them to fall off;

Maintenance

- Avoid collision, which may cause the LED lamp beads to be damaged and unable to work;
- The entire system is not waterproof and must not be used in wet or outdoor conditions without any protection;
- The brightness has been set before leaving the factory. If you want to adjust the brightness, please contact the manufacturer first and then make adjustments;
- If there are stains or dust on the back of the LED film, please wipe it with a dry, dust-free cloth. Do not use a wet cloth;

Shenzhen Filmbase Technology Co.,LTD

Tel: +86 755-28505346

Email: info@smartfilmbase.com

Office HQ:

31F, 3A Building, Smart Park, Baolong, Longgang, Shenzhen, China

Branch:

02B, 71F, Ping An Financial Building, No. 5033 Yitian Road, Fu'an Community, Futian Street, Futian District, Shenzhen

SHENZHEN Factory:

Building2、3, Huaqiang Industry Park . Baolong . Longgang. Shenzhen, China
